



stand confermati
confirmed booths

stand in opzione
reserved booths

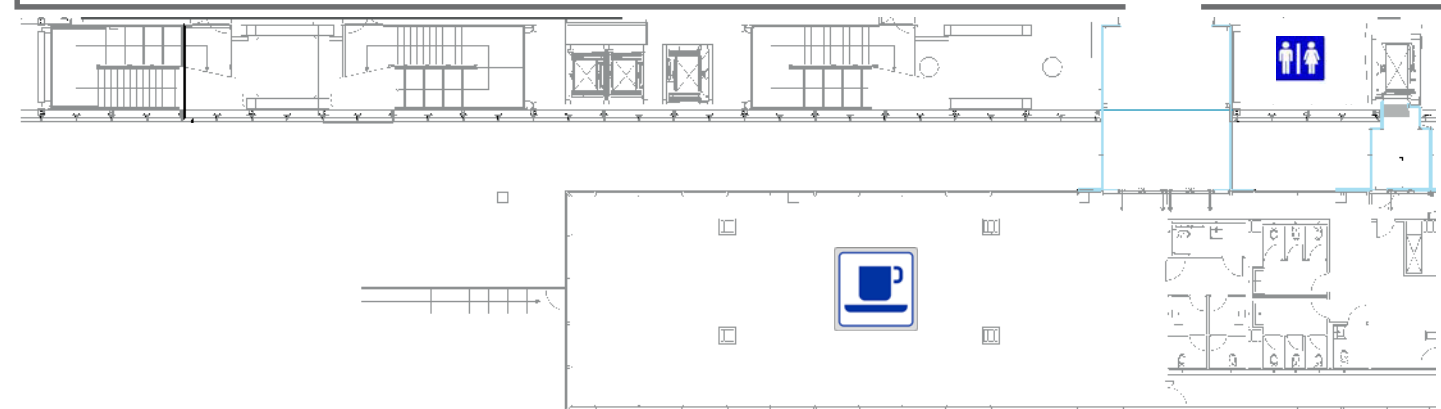
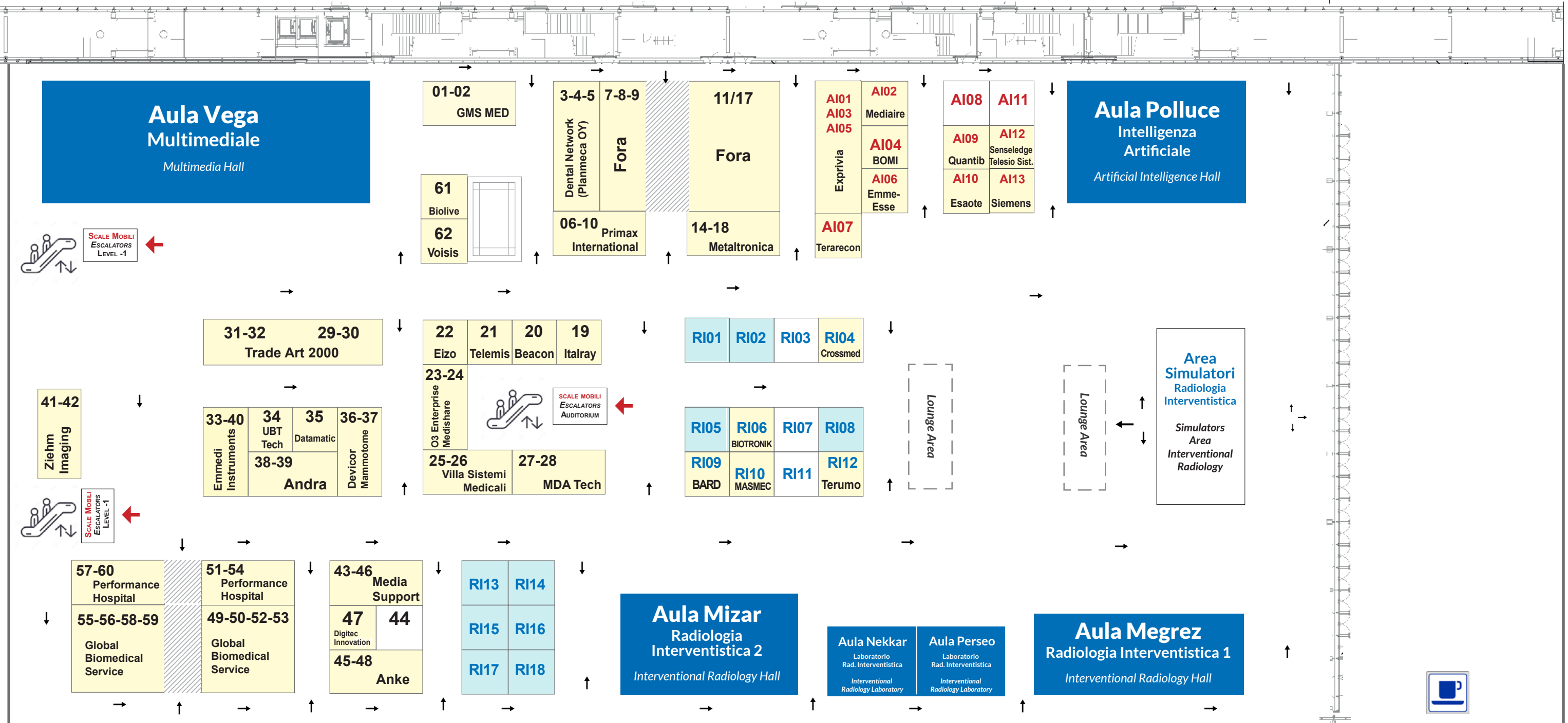
stand disponibili
available booths

RI Stand area Radiologia Interventistica
Booths Interventional Radiology Area

AI Stand area Intelligenza artificiale
Booths Artificial Intelligence Area

Dimensione stand (16m²)
Largh.: 4 mt Prof.: 4 mt Altezza: 3 mt (max.)

Booths size (16sqm)
Width: 4 mt Depth: 4 mt Height: 3 mt (max.)



38-39	ANDRA
45-48	ANKE (SHENZHEN ANKE HIGH-TECH CO., LTD.)
20	BEACON (SHENZHEN BEACON DISPLAY TECHNOLOGY CO., LTD)
61	BIOLIVE
35	DATAMATIC SISTEMI & SERVIZI
3-4-5	DENTAL NETWORK (PLANMECA OY)
36-37	DEVICOR MEDICAL ITALY (MAMMOTOME)
47	DIGITEC INNOVATION
22	EIZO
33-40	ENMEDI INSTRUMENTS
7/9-11/17	FORA
49/53-55/59	GLOBAL BIOMEDICAL SERVICE
01-02	GMS MED
19	ITALRAY
27-28	MDATECH
43-46	MEDIA SUPPORT

14-18	METALTRONICA
23-24	O3 ENTERPRISE - MESHARE
51/54-57/60	PERFORMANCE HOSPITAL
06-10	PRIMAX INTERNATIONAL
21	TELEMIS
AI_07	TERARECON
29/30-31/32	TRADEART 2000
25-26	VILLA SISTEMI MEDICALI
62	VOISIS
41-42	ZIEHM IMAGING
34	UBTTECH

AREA INTELLIGENZA ARTIFICIALE

AI_04	BOMI
AI_06	EMME-ESMES.
AI_10	ESAOTE

AI_1/3/5	EXPRIVIA
AI_02	MEDIAIRE
AI_09	QUANTIB
AI_12	SENSEEDGE - TELESIO SISTEMI
AI_13	SIEMENS
AI_07	TERARECON

AREA RADIOLOGIA INTERVENTISTICA

RI_04	CROSSMED
RI_06	BIOTRONIK
RI_09	BARD
RI_10	MASMEC
RI_12	TERUMO